

LD-E6 Series



Max DC 1500V



TUVPPP/UL4128



-40°C~125°C



UL94-V0



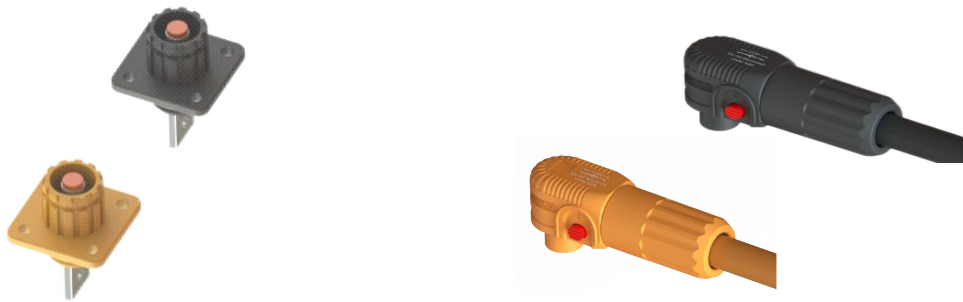
IP 68



UV Resistance



Product Overview 产品简介:



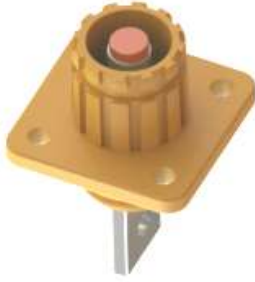
The LD-ES6 Series is a field installable, highly reliable alternative to common compression lugs. Using industry standard crimp, screw, and busbar termination options, thus eliminating the need to purchase special torque tools. LEADER LD-ES6 is an environmentally sealed version of our original E6 but available in smaller sizes, and features a quick lock and press-to-release design. LD-ES6 is a compact, quick mating, and robust product line. The LD-ES6 high amperage contact technology utilizes high tensile strength properties of a stamped and formed, high conductivity alloy grid to produce low insertion forces while maintaining a large conductive surface area. The V6 version of the LD-ES6 represents the culmination of three years of research and development in laser welding copper based alloys.

Technical Data 技术参数:

Rated Voltage 额定电压	Max DC 1500V
Certified & Qualified 执行标准	TUV PPP51090A / UL4128
Rated Current 额定电流	100A(10mm ²);100A(16mm ²);130A(35mm ²)
Ambient Temp 工作温度	-40°C up to +125°C
Contact Resistance 接触电阻	≤0.2mΩ
IP 防水等级	IP68
Fire Resistance 防火等级	UL94-V0
Materials 材质	Copper Alloy/PA66
Safety Lock System 安全锁	Double Protective Lock System



Order Data 订货信息:



橙色板端公头 LD-ES6-MO
LD-ES6 Male Connector:Orange



黑色板端公头 LD-ES6-MB
LD-ES6 Male Connector:Black

Male Type 公头型号	Voltage/Current	Terminal Type 端子类型	Color 本体颜色	Remark
LD-ES6-MO-B	1500V,130A	Busbar	Orange	
LD-ES6-MB-B			Black	
LD-ES6-MO-T		Threaded Post	Orange	
LD-ES6-MB-T			Black	
LD-ES6-MO-10	1500V,100A	Crimp for 10mm ² / 8 AWG Copper Cable	Orange	
LD-ES6-MB-10			Black	
LD-ES6-MO-16	1500V,100A	Crimp for 16mm ² / 6 AWG Copper Cable	Orange	
LD-ES6-MB-16			Black	
LD-ES6-MO-25	1500V,130A	Crimp for 25mm ² / 4 AWG Copper Cable	Orange	
LD-ES6-MB-25			Black	



橙色线端 L 母头 LD-ES6-FO
LD-ES6 Female L-Connector:Orange



黑色线端 L 母头 LD-ES6-FB
LD-ES6 Female L-Connector:Black

Female Type 母头型号	Voltage/Current	Terminal Type 端子类型	Cable Spec	Color	Remark
LD-ES6-FLO-10	1500V,100A	Crimp for 10mm ² / 8 AWG Copper Cable	10mm ² / 8 AWG	Orange	
LD-ES6-FLB-10				Black	
LD-ES6-FLO-16	1500V,130A	Crimp for 16mm ² / 6 AWG Copper Cable	16mm ² / 6 AWG	Orange	
LD-ES6-FLB-16				Black	
LD-ES6-FLO-25	1500V,130A	Crimp for 25mm ² / 4 AWG Copper Cable	25 mm ² / 4 AWG	Orange	
LD-ES6-FLB-25				Black	

